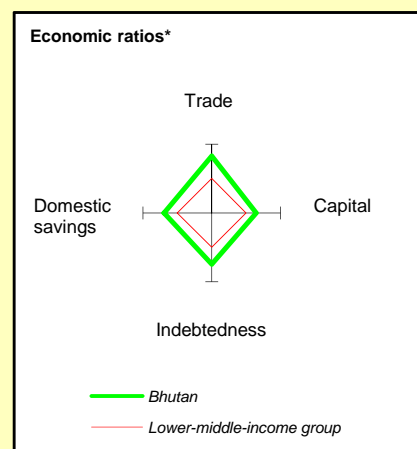
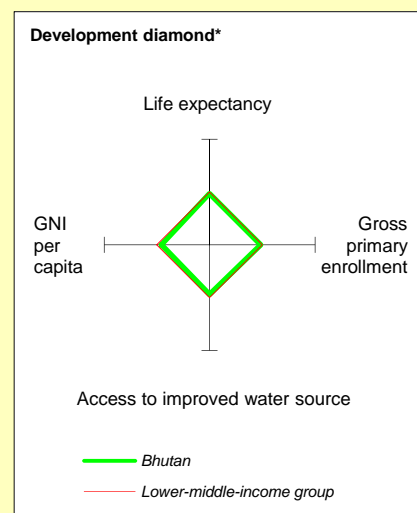


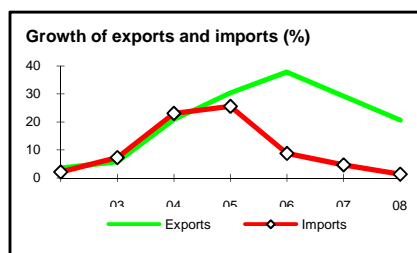
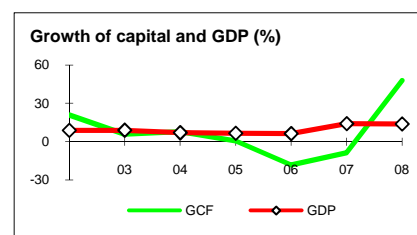
# Bhutan at a glance

12/9/09

POVERTY and SOCIAL	Bhutan	South Asia	Lower-middle-income		
<b>2008</b>					
Population, mid-year ( <i>millions</i> )	0.69	1,543	3,702		
GNI per capita ( <i>Atlas method, US\$</i> )	1,900	986	2,078		
GNI ( <i>Atlas method, US\$ billions</i> )	1.3	1,522	7,692		
<b>Average annual growth, 2002-08</b>					
Population (%)	2.3	1.5	1.2		
Labor force (%)	5.9	2.2	1.6		
<b>Most recent estimate (latest year available, 2002-08)</b>					
Poverty (% of population below national poverty line)	..	..	..		
Urban population (% of total population)	31	30	41		
Life expectancy at birth ( <i>years</i> )	66	65	68		
Infant mortality ( <i>per 1,000 live births</i> )	54	59	46		
Child malnutrition (% of children under 5)	..	41	26		
Access to an improved water source (% of population)	81	87	86		
Literacy (% of population age 15+)	53	63	83		
Gross primary enrollment (% of school-age population)	106	108	109		
Male	105	111	112		
Female	106	104	106		
<b>KEY ECONOMIC RATIOS and LONG-TERM TRENDS</b>					
	<b>1988</b>	<b>1998</b>	<b>2007</b>	<b>2008</b>	
GDP ( <i>US\$ billions</i> )	0.26	0.36	1.2	1.3	
Gross capital formation/GDP	41.7	36.8	41.9	46.6	
Exports of goods and services/GDP	30.4	35.1	52.6	55.9	
Gross domestic savings/GDP	14.8	20.4	37.3	51.4	
Gross national savings/GDP	..	38.4	44.1	60.1	
Current account balance/GDP	-22.2	10.9	-11.5	6.7	
Interest payments/GDP	0.3	0.6	0.6	3.0	
Total debt/GDP	25.6	48.1	67.2	54.0	
Total debt service/exports	1.7	6.6	5.2	10.7	
Present value of debt/GDP	..	..	64.4	46.4	
Present value of debt/exports	..	..	123.8	78.2	
	<b>1988-98</b>	<b>1998-08</b>	<b>2007</b>	<b>2008</b>	<b>2008-12</b>
<i>(average annual growth)</i>					
GDP	4.9	8.3	14.0	13.8	7.9
GDP per capita	5.4	5.4	12.0	12.0	6.4
Exports of goods and services	..	22.7	29.3	20.6	39.6



STRUCTURE of the ECONOMY	1988	1998	2007	2008
<i>(% of GDP)</i>				
Agriculture	38.0	31.6	20.5	18.7
Industry	24.3	32.7	43.5	46.1
Manufacturing	5.5	9.7	6.8	6.5
Services	37.7	35.7	36.0	35.2
Household final consumption expenditure	71.5	58.9	38.3	25.8
General gov't final consumption expenditure	13.7	20.7	19.8	20.5
Imports of goods and services	53.3	52.4	57.1	51.1
	<b>1988-98</b>	<b>1998-08</b>	<b>2007</b>	<b>2008</b>
<i>(average annual growth)</i>				
Agriculture	1.8	2.4	1.2	1.1
Industry	5.3	11.1	30.4	25.6
Manufacturing	10.5	4.3	4.9	5.4
Services	7.7	9.2	7.3	7.9
Household final consumption expenditure	..	2.7	11.8	-24.8
General gov't final consumption expenditure	..	8.1	3.0	12.3
Gross capital formation	..	2.2	-8.8	47.9
Imports of goods and services	..	12.2	4.7	1.3



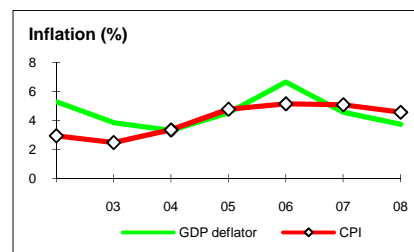
Note: 2008 data are preliminary estimates.

This table was produced from the Development Economics LDB database.

\* The diamonds show four key indicators in the country (in bold) compared with its income-group average. If data are missing, the diamond will be incomplete.

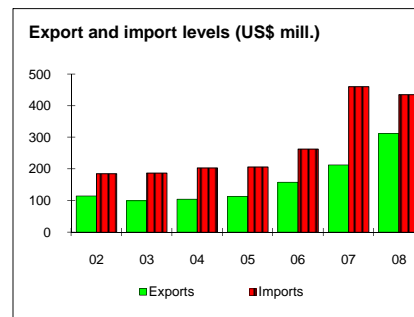
## PRICES and GOVERNMENT FINANCE

	1988	1998	2007	2008
<b>Domestic prices</b> (% change)				
Consumer prices	10.1	10.6	5.1	4.6
Implicit GDP deflator	6.9	11.7	4.6	3.7
<b>Government finance</b> (% of GDP, includes current grants)				
Current revenue	..	33.7	35.8	37.7
Current budget balance	..	15.8	19.4	18.5
Overall surplus/deficit	..	1.0	3.0	-3.9



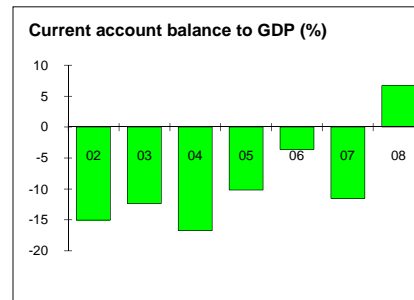
## TRADE

	1988	1998	2007	2008
<i>(US\$ millions)</i>				
Total exports (fob)	53	111	212	312
Agricultural products	..	12	..	..
Electricity	..	35	..	..
Manufactures	..	..	..	..
Total imports (cif)	92	136	461	435
Food	..	44	..	..
Fuel and energy	..	17	..	..
Capital goods	..	..	..	..
Export price index (2000=100)	..	..	..	..
Import price index (2000=100)	..	..	..	..
Terms of trade (2000=100)	..	..	..	..



## BALANCE of PAYMENTS

	1988	1998	2007	2008
<i>(US\$ millions)</i>				
Exports of goods and services	76	126	254	364
Imports of goods and services	134	160	543	499
Resource balance	-58	-33	-288	-136
Net income	0	10	-16	-7
Net current transfers	..	62	171	228
Current account balance	-58	39	-133	86
Financing items (net)	54	7	112	31
Changes in net reserves	4	-46	21	-116
<b>Memo:</b>				
Reserves including gold (US\$ millions)	89	216	..	..
Conversion rate (DEC, local/US\$)	13.9	41.3	40.4	42.8



## EXTERNAL DEBT and RESOURCE FLOWS

	1988	1998	2007	2008
<i>(US\$ millions)</i>				
Total debt outstanding and disbursed	67	171	775	692
IBRD	0	0	0	0
IDA	10	24	87	94
Total debt service	1	9	31	81
IBRD	0	0	0	0
IDA	0	0	1	2
Composition of net resource flows				
Official grants	15	28	55	63
Official creditors	6	56	8	5
Private creditors	23	-2	0	0
Foreign direct investment (net inflows)	..	..	78	30
Portfolio equity (net inflows)	0	0	0	0
World Bank program				
Commitments	5	14	0	0
Disbursements	2	1	9	9
Principal repayments	0	0	1	1
Net flows	2	1	8	8
Interest payments	0	0	1	1
Net transfers	2	0	7	7

